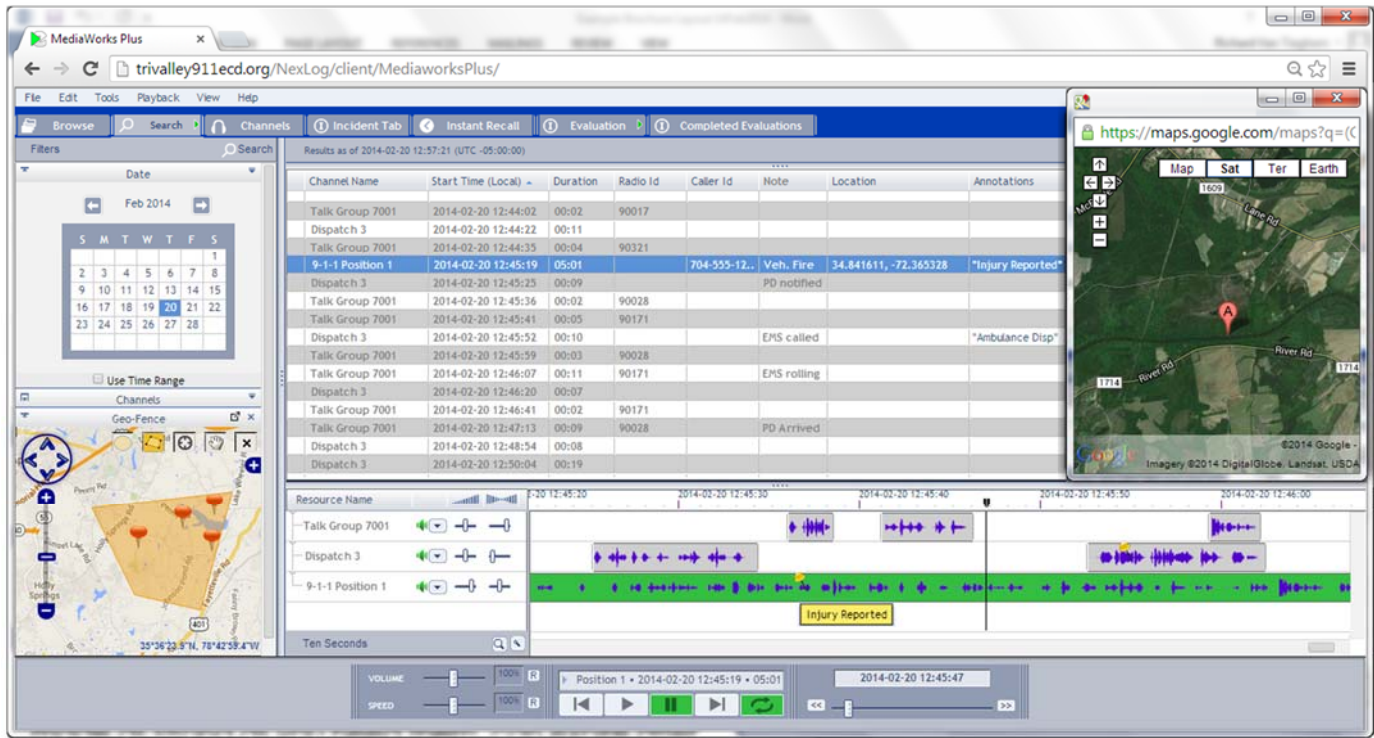


Eventide **MediaWorks PLUS™** software for NexLog recorders provides you with a comprehensive set of easy-to-use tools for search, replay, instant recall, incident reconstruction, export and much more.



## SECURE BROWSER-BASED ACCESS

Securely access assigned resources via networked PCs using Chrome, Firefox or Internet Explorer.

## MULTI-PARAMETER SEARCH

Finding recordings is quick and easy. Search by date/time, channel, resource and any metadata.

## GEO-FENCE SEARCH

Search via map for recordings that are tagged with latitude/longitude (such as wireless E911 calls).\*\*

## MULTI-CHANNEL GRAPHICAL TIME-LINE

Quickly view the timing of recordings across any number of channels, and replay from the time-line.

## FLEXIBLE PLAYBACK CAPABILITIES

Recordings may be replayed sequentially or mixed. Controls include pitch-corrected adjustable speed, loop, skip forward/back, playback AGC and more.

## WAVEFORM DISPLAYS

You can visually determine the locations of audio content and silence within important recordings.



## TEXT ANNOTATIONS

Multiple text annotations can be quickly added to recordings along the time-line, documenting the timing of important actions and events.



## METADATA DISPLAY ON THE CALL-VIEW GRID

Easily customize which metadata fields are presented on the call-view grid. Recordings may be sorted (ascending or descending) using any of the displayed metadata columns.

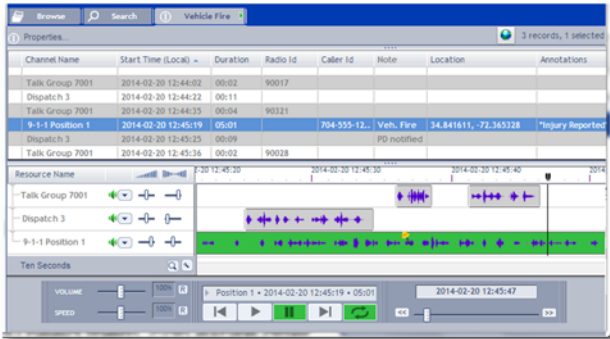
**CALL NOTES**

You can quickly create a note that summarizes the important events within each recording.

Start Time (Local)	Duration	Note
2014-02-21 00:58:17	00:13	Dispatch of Fire Crew to Runway 21
2014-02-21 00:58:47	00:14	Activated Mutual Aid Request

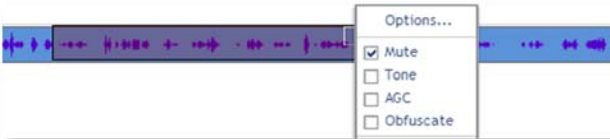
**INCIDENT TABS**

Incident-related recordings can be easily grouped together onto dedicated Incident Tabs. Incidents may be named, saved and recalled at a later date.



**REDACTION**

The built-in audio redaction tool empowers you to protect private information prior to export.

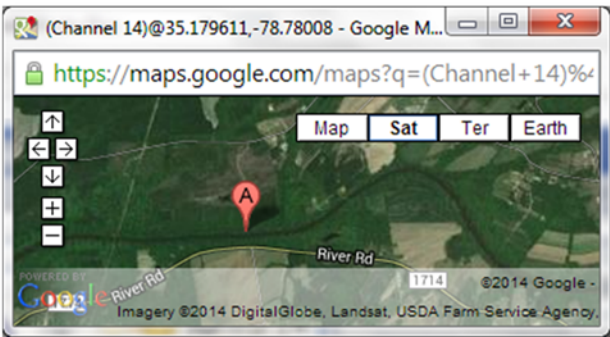


**REPLAY OF PC SCREEN RECORDINGS**

Use screen replay\* to review multimedia interactions, and to help evaluate staff performance.

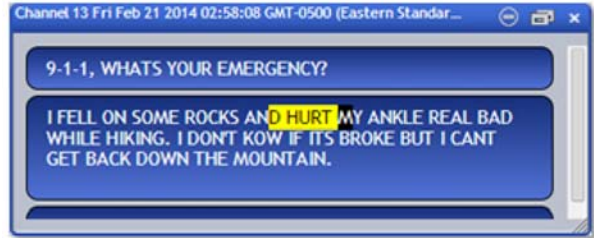
**VIEW CALL LOCATIONS ON A MAP**

For recordings tagged with latitude/longitude, you can view the caller's reported location on a map.\*\*



**TEXT MESSAGE REPLAY**

Recorded text interactions\* can be viewed and replayed (for TDD and SMS-to-911 via 45 Baud analog TTY; also for i3-standard NG911 MMS).

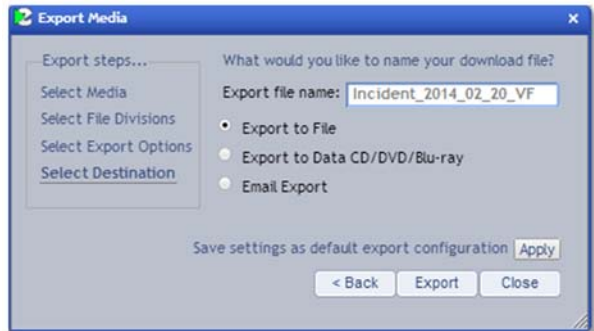


**TALKING DATE & TIME**

Spoken date & time can be enabled during replay, and may be incorporated within exported media.

**FLEXIBLE EXPORT AND EMAIL**

The menu-driven export tool lets you quickly make copies of complete incidents or individual calls. Send via email or export to USB, CD, DVD or Blu-ray.



**INSTANT RECALL**

The multi-channel Instant Recall tab helps call takers and dispatchers improve their accuracy and performance by quickly confirming what was said.

**LIVE MONITORING**

Multi-channel live monitoring allows you to conveniently listen to calls as they are occurring.

Channel Name	Channel	Live Monitor	Channel Status
9-1-1 Position 3	1		Recording
Dispatch South	2		Recording
EMS Talk Group	3		Idle

**EVALUATE CALLS WITH QUALITY FACTOR**

You can evaluate interactions via Eventide Quality Factor software\*, which appears on a separate tab.